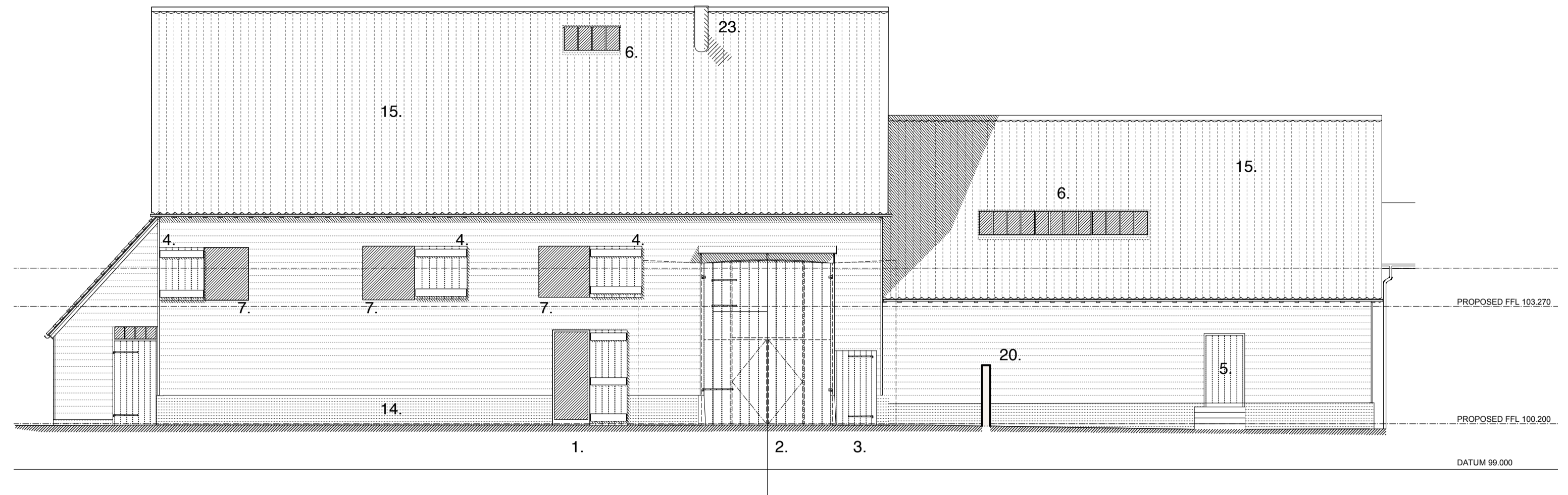


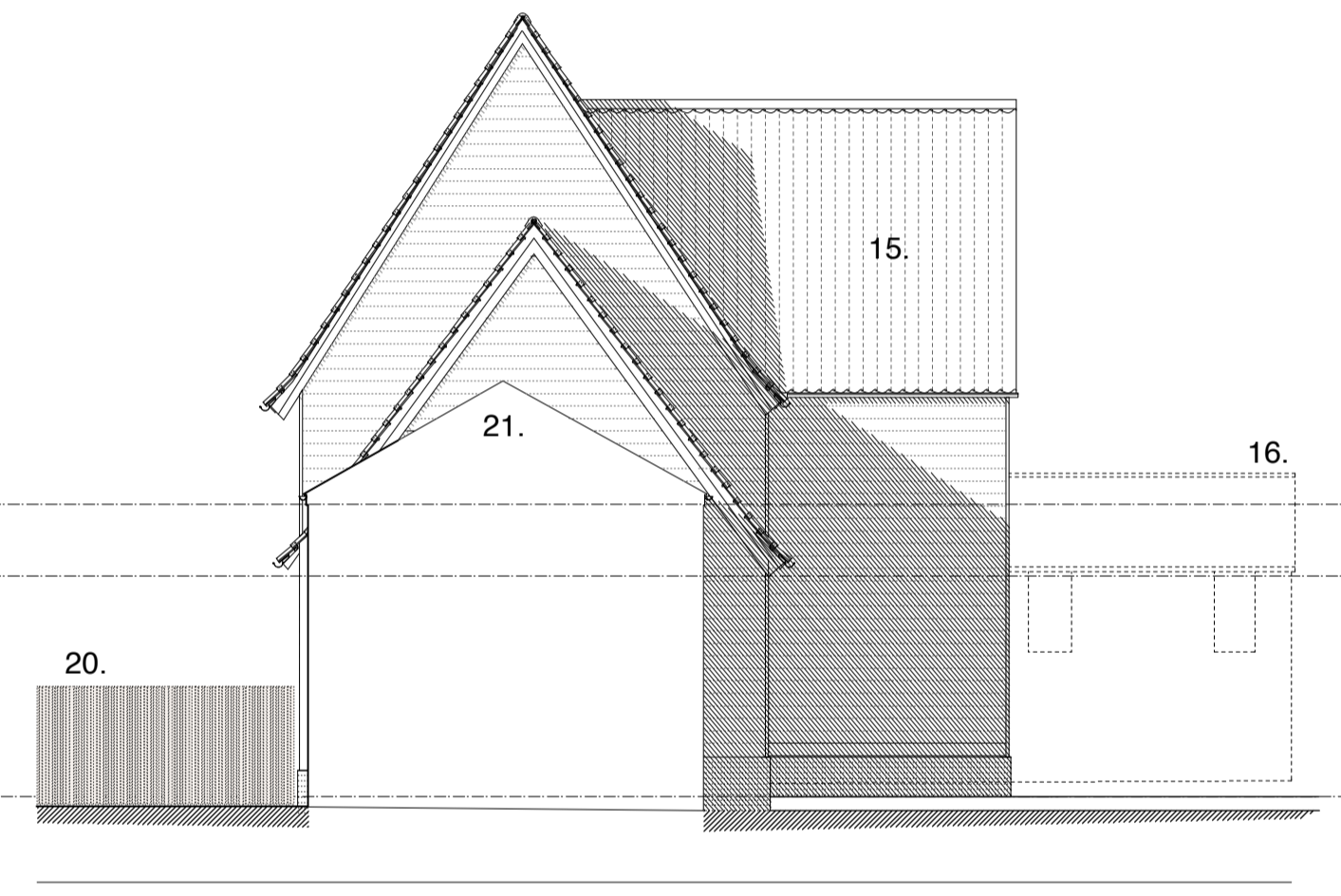
SOUTH ELEVATION



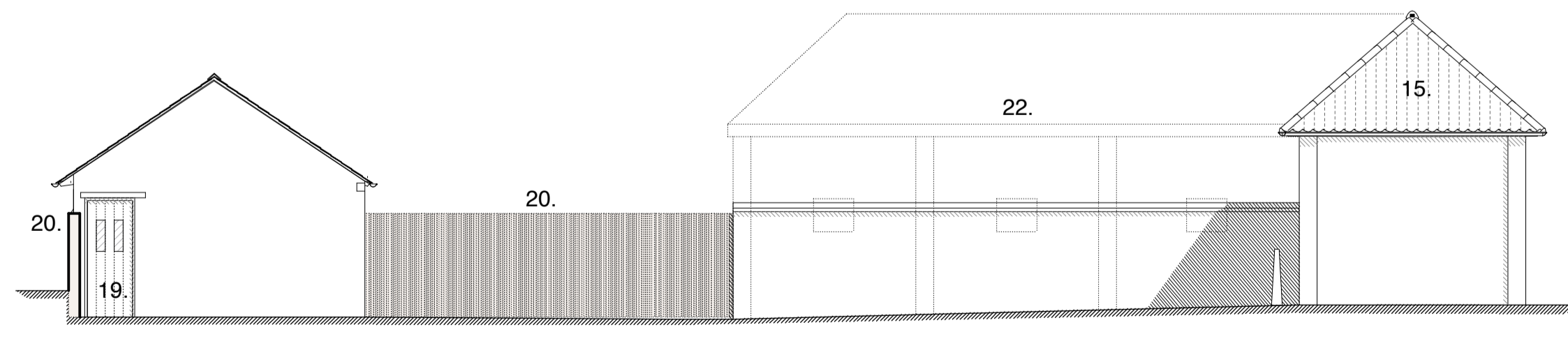
EAST ELEVATION



WEST ELEVATION



NORTH ELEVATION



WEST ELEVATION

KEY to Elevations

- 1. Main entrance - door set within existing opening enlarged.
- 2. Glazed screen set within existing opening - black stained.
- 3. New boarded door in original opening.
- 4. Existing doors repaired and held open.
- 5. Door fixed closed and insulated studwork in-fill behind.
- 6. Series of conservation rooflights recessed below roof plane.
- 7. New opening light set within existing opening - inward opening.
- 8. New window with horizontal sliding sashes - window fixed over outer face of studwork.
- 9. Existing weatherboarding to be repaired and reinstated following insulation of timberframe.
- 10. Form new openings between brick piers with cast stone lintels over.
- 11. Timber bollards - central 2 no. removable.
- 12. Black stained glazed screen set back within porch.
- 13. Open up lower section of wall to porch - remove plinth and studwork to mid-rail height either side of the central post: new natural stone base to central post.
- 14. Existing brick plinth repaired and some localised rebuilding where failed.
- 15. Red clay pan tiles.
- 16. Steel frames later extension removed.
- 17. Galvanised steel rainwater goods.
- 18. Boundary line to unit 4.
- 19. New oak boarded and part glazed door and frame in existing opening.
- 20. Oak batten screen 1.8 m high.
- 21. Outline of existing neighbouring building.
- 22. Part of the existing range demolished - back wall to remain and lowered to 2.0 m high and new brick capping laid.
- 23. Red clay pot flue termination.

DO NOT SCALE FROM THIS DRAWING. CHECK ALL DIMENSIONS ON SITE.

REV	DATE	NOTES
A	2014-01-30	Planning application issue
B	2014-06-18	Linear rooflight on east side over stairwell repositioned up the roof slope to prevent over-looking.

DRAWN	PROJECT	TITLE		
	Anstey Hall Farm Barns Trumpington, Cambridge PROPOSED RESIDENTIAL DEVELOPMENT	Barn 1 - Elevations		
CHECKED	SCALE	DATE	NO	REV
	1:100 @ A1	December 2013	1265/133	B

**cowper griffith**  
ARCHITECTS LLP

15 HIGH STREET, WHITTLESFORD, CAMBRIDGE, CB22 4LT  
Tel 01223 835998 Fax 01223 837327 architects@cowpergriffith.co.uk